


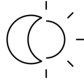





sensIQ S

EVO black
 EAN 4007841 034979
 Article number 034979



		2000 W					Teach		5 years
<small>infrared sensor 3 x 100°</small>	<small>3 zones scalable 2-20m</small>	<small>max. 2000 W</small>	<small>IP54</small>	<small>2 - 2000 lux daylight operation</small>	<small>5 sec - 15 min</small>	<small>ideal 2 - 5 m</small>	<small>Teach mode</small>	<small>energy saving</small>	<small>manufacturer's warranty steinel-professional.de/garantie</small>

Function description

The evolution of perfection. The sensIQ S is just as perfect as its larger role model. For indoors and outdoors, ideal for building entrances, loading bays, for mounting heights of up to 5 m, quadruple sensor system for optimum surveillance over 3x100° coverage angle, 20 m reach (tangential), reach setting to the accuracy of a metre in 3 independent directions. Remote control and corner wall mount bracket included.

Technical specifications

Dimensions (L x W x H)	128 x 114 x 74 mm	LED lamps > 8 W	600 W
With motion detector	Yes	Capacitive load in µF	176 µF
Manufacturer's Warranty	5 years	Power supply, detail	500 VA max., 120 V
Settings via	Remote control, Potentiometers, Smart Remote	Technology, sensors	passive infrared, Light sensor
With remote control	Yes	Mounting height	2,00 – 5,00 m
Version	black	Mounting height max.	5,00 m
PU1, EAN	4007841034979	Optimum mounting height	2 m
Type	Motion detectors	Detection angle	300 °
Application, place	Indoors, Outdoors	Angle of aperture	180 °
Application, room	multi-storey / underground car park, outdoors, warehouse, front door, all round the building, courtyard & driveway, Indoors	Sneak-by guard	Yes
Colour	black	Capability of masking out individual segments	Yes
Colour, RAL	9005	Electronic scalability	No
Includes corner wall mount	Yes	Mechanical scalability	Yes
Installation site	wall, corner	Reach, radial	r = 4 m (42 m ²)
		Reach, tangential	r = 20 m (1047 m ²)
		Switching zones	1360 switching zones

sensIQ S

EVO black
 EAN 4007841 034979
 Article number 034979



Technical specifications

Installation	Surface wiring, Wall, corner
IP-rating	IP54
Ambient temperature	from -20 up to 50 °C
Material	Plastic
Mains power supply	100 – 240 V / 50 – 60 Hz
Switching output 1, resistive	2000 W
Switching output 1, number of LEDs / fluorescent lamps	50 pcs.
Fluorescent lamps, electronic ballast	1500 W
Fluorescent lamps, uncorrected	1000 VA
Fluorescent lamps, series-corrected	700 VA
Fluorescent lamps, parallel-corrected	1000 VA
Switching output 1, low-voltage halogen lamps	1000 VA
LED lamps < 2 W	100 W
LED lamps > 2 W < 8 W	300 W

Functions	Normal / test mode, Manual ON / ON-OFF
Twilight setting	2 – 1000 lx
Time setting	5 s – 15 Min.
Basic light level function	No
Main light adjustable	No
Twilight setting TEACH	Yes
Constant-lighting control	No
Interconnection	Yes
Type of interconnection	Master/master
Interconnection via	Cable
Product category	Motion detector

Accessories

EAN 4007841 007638	Remote control RC9
EAN 4007841 608804	Corner wall mount sensIQ S
EAN 4007841 608835	Corner wall mount sensIQ S
EAN 4007841 009151	Remote control Smart Remote
EAN 4007841 608828	Corner wall mount sensIQ S

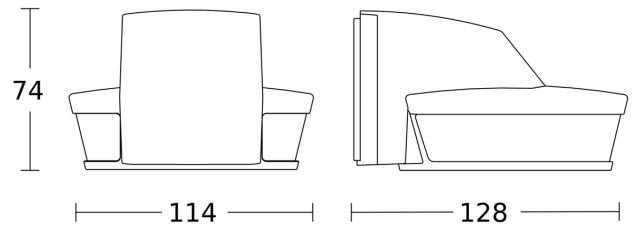
sensIQ S

EVO black
 EAN 4007841 034979
 Article number 034979

Detection Zone

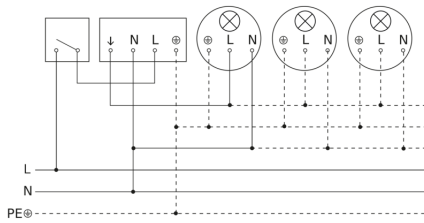


Dimension Drawing

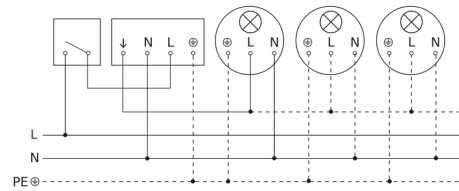


Possible mounting height: 2,00 m - 5,00 m
 Orange: radial
 Black: tangential
 3 scalable zones

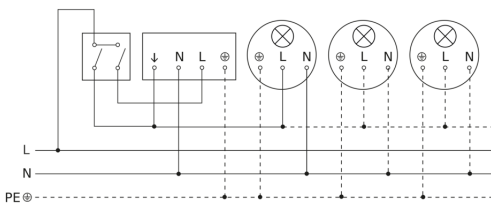
Light without neutral conductor



Light with neutral conductor



Connection using two-circuit switch for manual and automatic operation



Connection of 4-fold push-button coupler to DALI2 APC

